



THE OAK
GROVE



THE OAK GROVE



CONTEMPORARY LIVING INSPIRED BY BEAUTIFUL, WELL-MADE THINGS.

Off a beaten path, down a road less traveled by, you will discover something with the potential to make all the difference. It is here that you will find something rare and special, the chance to own a brand new home in Altadena. The Oak Grove of Altadena introduces Arts and Crafts-inspired contemporary living surrounded by nature in an intimate and established neighborhood setting.

The core characteristics of the Arts and Crafts movement are a belief in craftsmanship, which stresses the inherent beauty of the material, the importance of nature as inspiration, and the value of simplicity, utility, and beauty.

PLAN 1

4 BEDROOM + BONUS | 3 BATH | APPROX. 2,653 SQ FT



PLAN 1A

PLAN 2

5 BEDROOM + BONUS | 4 BATH | APPROX. 2,857 SQ FT



PLAN 2A



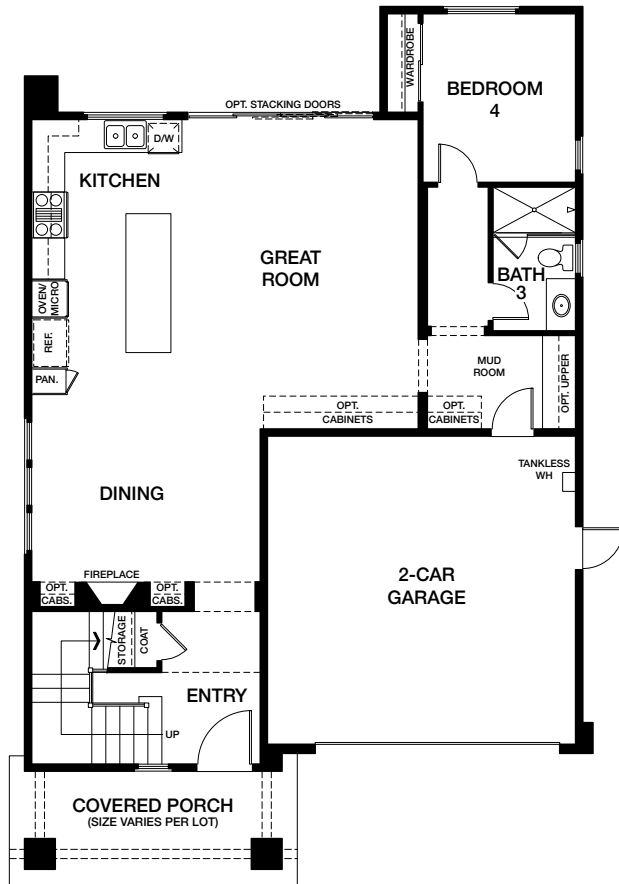
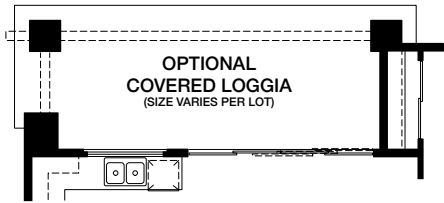
PLAN 1B



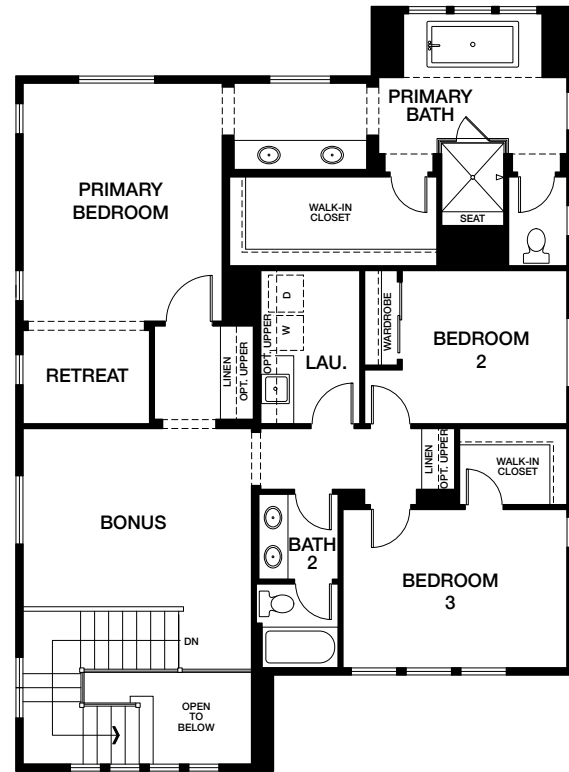
PLAN 2B

PLAN 1

4 BEDROOM + BONUS | 3 BATH | APPROX. 2,653 SQ FT



FIRST FLOOR



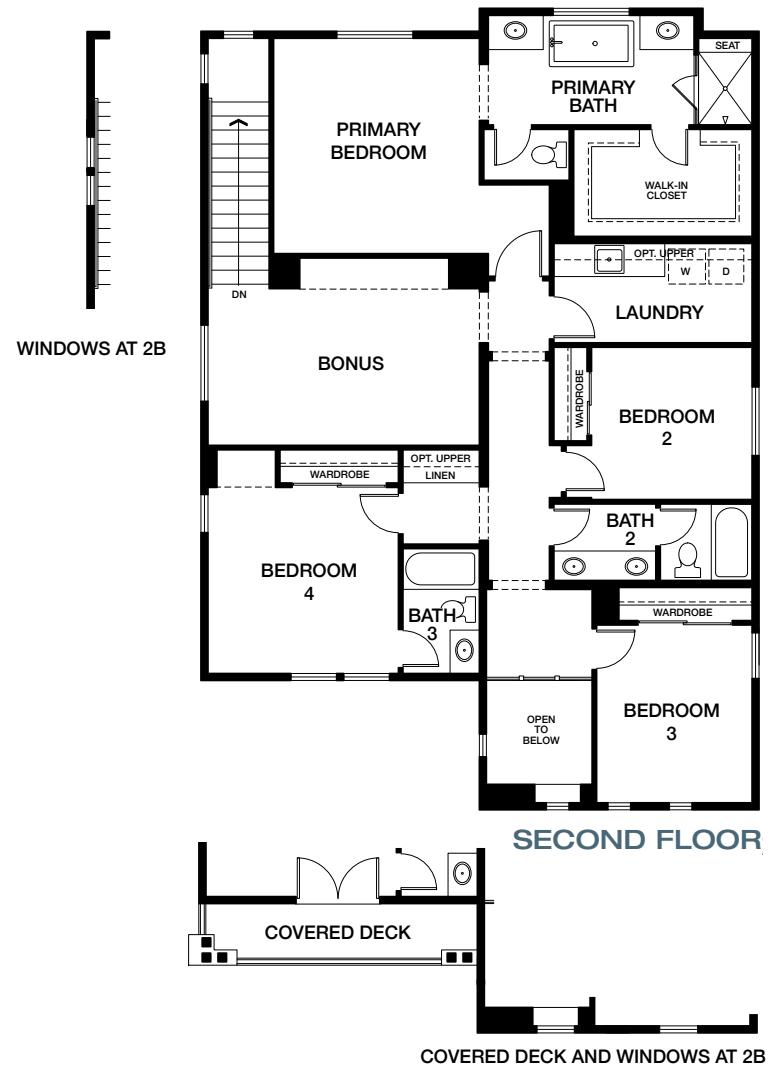
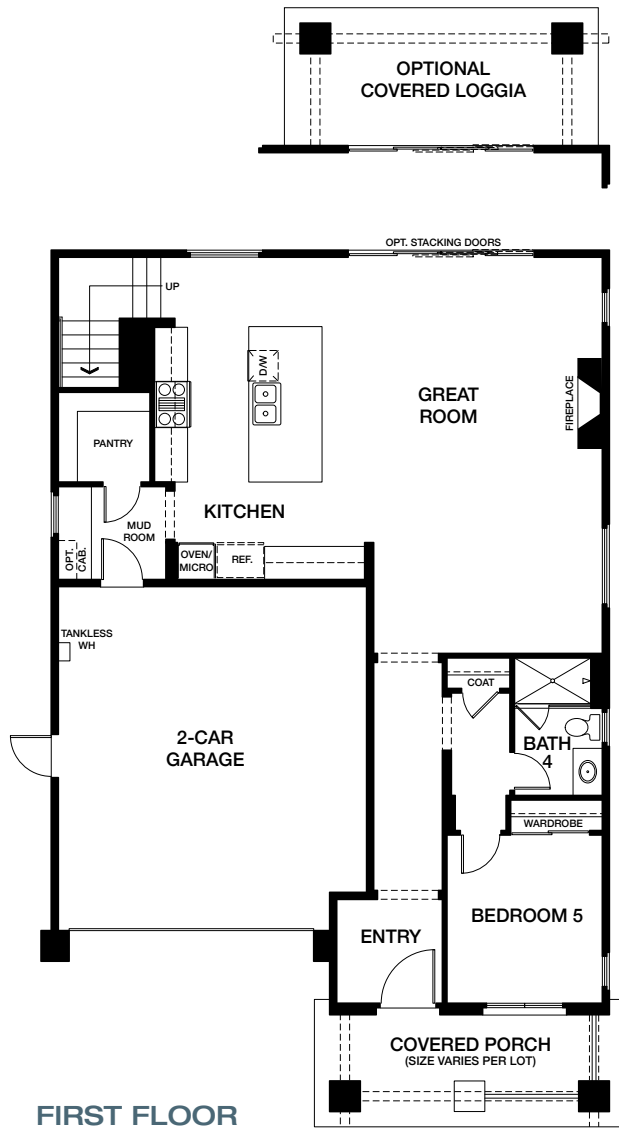
SECOND FLOOR



Square footages are approximate only. All renderings, floor plans and maps are artist's conception and are not intended to be an accurate representation of buildings, fencing, walks, driveways or landscaping and are not necessarily to scale. Many items vary considerably from unit to unit including, but not limited to, decks, porches, storage areas, windows, doors, cabinets and floor plan layout details. Specification and appointments of the model home and/or floor plans depicted may be unique and not necessarily replicated or available in all homes and are subject to change at any time without notice. See a sales representative for details. Any model(s) depicted do not reflect racial preference. 04.17.24

PLAN 2

5 BEDROOM + BONUS | 4 BATH | APPROX. 2,857 SQ FT





DESIGN CURATED INTERIORS

A SIMPLE APPROACH TO STYLE.

Beauty, balance, ease, and elegance. With Design Curated Interiors, you will enjoy an effortless fusion of these elements and a starting point for creating harmonious living spaces. We have gathered all the best interior elements into distinctive color schemes, incorporating cabinetry, countertops, fixtures, and more. Colors, textures, and materials that reflect current and classic interior design trends are included.

Yet, your home will be the only one just like it, as every scheme was meticulously curated and tailored to each of the 16 homesites. From this foundational design canvas, you can expand and personalize your furnishings and accessories and make your home's interior design uniquely your own. Because no two homesites are styled alike, the hardest part will be choosing your favorite.

INCLUDED FEATURES

HAND-SELECTED, DESIGNER PERFECTED.

These homes are filled with premium appointments that were thoughtfully selected to enhance their beauty, comfort, and convenience. The selection of features has been elevated, so your lifestyle will be, too. See what's included here.



VIEW FEATURES

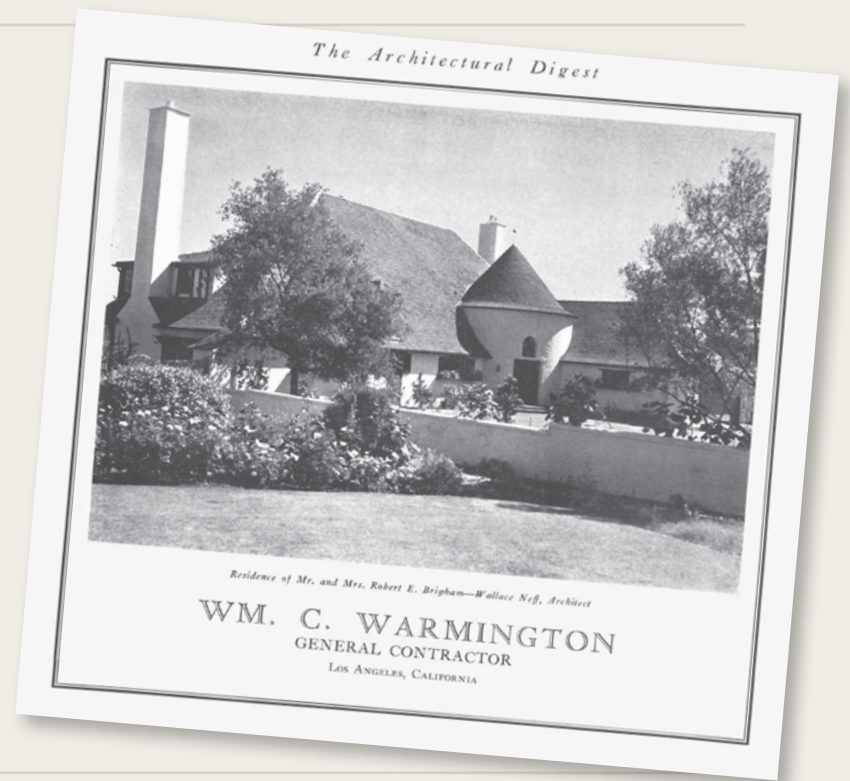


A TRADITION OF EXCELLENCE SINCE 1926

YOU WILL FEEL RIGHT AT HOME.

Warmington Residential traces its roots to 1926 when the first Warmington company built custom residences for movie stars and some of the world's most celebrated personalities. Working with now famous architects, including Wallace Neff, who designed and built numerous homes in Altadena and was responsible for the design and construction of St. Elizabeth Catholic Church, Warmington gained a reputation for excellence.

Over the years, the various Warmington companies have applied the same custom-like craftsmanship when building brand-new production homes. This paved the way for expansion during the postwar building boom and beyond. Nearly 100 years later, Warmington Residential still draws on this heritage as we build homes for a new generation of homebuyers.



Warmington
RESIDENTIAL

THE OAK GROVE



WHERE NATURE AND THE CITY MEET

Secluded in the foothills of the San Gabriel Mountains, Altadena embodies natural beauty, community, and a laid-back lifestyle. It is renowned for historic homes and streets, picturesque surroundings, quality schools, cool people, and abundant opportunities to enjoy time outdoors. The community fosters connections through local events, farmers' markets, neighborhood gatherings, an eclectic mix of restaurants, cafes, and locally owned businesses, creating a welcoming environment that is well-loved for its balance of suburban serenity and urban amenities. It feels miles away, yet Altadena is convenient to Pasadena and greater Los Angeles, offering an ideal residential setting with a distinctive community feel.

183 E PALM ST. | ALTADENA, CA 91001
OAKGROVEALTADENA.COM | 626.696.8830



Warmington
RESIDENTIAL