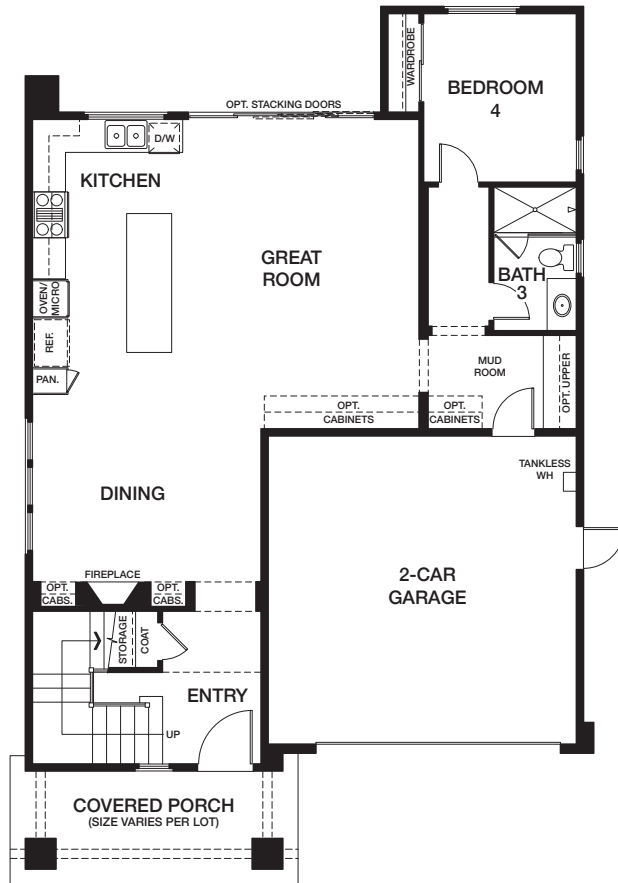
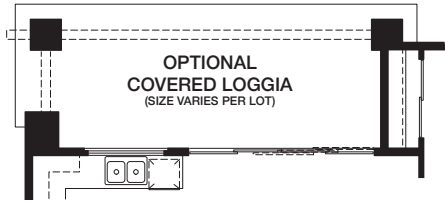


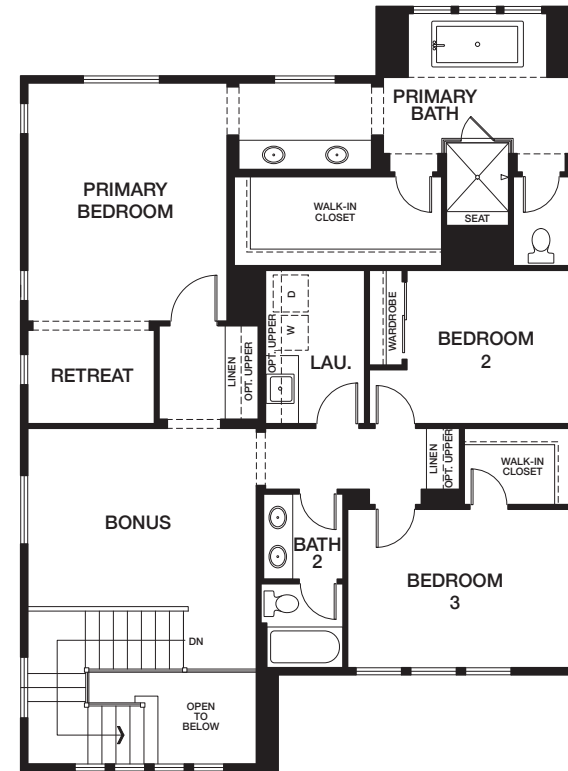
HOMESITE 11 | PLAN 1

181 EAST PALM STREET, ALTADENA CA 91001

4 BEDROOM + BONUS | 3 BATH | APPROX. 2,653 SQ FT



FIRST FLOOR



SECOND FLOOR

Square footages are approximate only. All renderings, floor plans and maps are artist's conception and are not intended to be an accurate representation of buildings, fencing, walks, driveways or landscaping and are not necessarily to scale. Many items vary considerably from unit to unit including, but not limited to, decks, porches, storage areas, windows, doors, cabinets and floor plan layout details. Specification and appointments of the model home and/or floor plans depicted may be unique and not necessarily replicated or available in all homes and are subject to change at any time without notice. See a sales representative for details. Any model(s) depicted do not reflect racial preference. 10.04.24



Warmington
RESIDENTIAL